



# International Operational Modal Analysis Conference

20 - 23 May 2025 | Rennes, France

## Title of the article

*Jane Doe*<sup>1</sup>, and *John Doe*<sup>2</sup>

<sup>1</sup> Affiliation, E-mail address

<sup>2</sup> Affiliation, E-mail address

### ABSTRACT

The length of abstracts should be 200-500 words. They should clearly outline objectives, methodologies and results of the study. They should not contain any citations, nor formulas. The abstract and the paper should be presented in its final form, as it is intended to appear, since the proceedings will be printed by offset according to the typescripts received. Please check your typescript carefully to avoid any typographical and spelling errors and do not miss out any required details (e.g. author information). The papers will only be published in the proceedings if one of the authors presents the paper at the conference.

*Keywords: Conference, Operational, Modal, Analysis*

## 1. INTRODUCTION

### 1.1. General information

The paper must follow the style and format instructions given in this document, which can be used as a template. The paper must not have any page numbers or footers.

### 1.2. Length of the document

The recommended length for a paper is 6 to 8 pages. This includes figures, tables, acknowledgments, references, abbreviations list, etc. Color figures or drawings can be used in the paper. The maximum allowed size of the final pdf version of the paper is 10 MB.

### 1.3. Language

The text must be written in English, including the labels and legends in the figures.

## **2. FORMATTING INSTRUCTIONS**

### **2.1. Paper size and margins**

The paper size is A4 (21.0 cm × 29.7 cm) and the typing area has 25 mm margins to all the page borders (top, bottom, left and right). The typing area is, therefore, 160 mm wide.

### **2.2. Fonts, spacing, and styles**

The paper needs to be written with the Times New Roman typeface. This includes section titles, text captions of figures and tables, citations and reference list. Equations can be written with the default font of the used text processor (i.e. Cambria Math for MS Word).

#### *2.2.1. Paper title*

The paper title is written in a bold character style and a size of 18 pt. This paragraph is left aligned and with single line spacing and with upper-case and lower-case letters. The spacing before the title (to the top of the typing area) is 36 pt.

#### *2.2.2. Authors*

The authors' names (first name and last name) are in a cursive character style and a size of 11 pt. This paragraph is left aligned and with single line spacing. The spacing between the title and the authors' names is 24 pt.

#### *2.2.3. Affiliation and contact information*

The authors' affiliation and E-mail address appear in a regular character style and a size of 9 pt. This paragraph is left aligned and with single line spacing. The spacing between the authors' names and affiliations is 18pt.

#### *2.2.4. Abstract*

The abstract is in a regular character style and a size of 11 pt. Abstract paragraphs are justified (left and right) and with single line spacing. The spacing between the authors' names affiliation and the abstract is 48 pt.

#### *2.2.5. Keywords*

The keywords are in a cursive character style and a size of 11 pt. Keywords paragraph is justified (left and right) and with single line spacing. The spacing between the abstract and the keywords is 24 pt. The spacing between the keywords and the title of first level section of the paper is 36 pt.

#### *2.2.6. Section titles*

The titles are in bold character style and a 11 pt size. The title paragraph is left aligned, with all the letters capitalized and with single line spacing. These titles are preceded by Arabic numbers (1., 2., 3., ...) followed by 0.75 cm tabulation. Leave one blank lines (24 pt) before the first level titles and 6 pt after.

The titles of second level sections are in bold character style and a 11 pt size. The title paragraph is left aligned, with only the first letter capitalized and with single line spacing. These titles are preceded by Arabic numbers (1.1., 1.2., 1.3., ...) followed by 1 cm tabulation. Use single line spacing. Leave one blank line (12 pt) before the second level titles, except when they are placed after a first level title, in which case the spacing is only 6 pt.

The titles of third level sections are in italic character style and a size of 11 pt. The title paragraph is left aligned, with only the first letter capitalized and with single line spacing. These titles are preceded by

Arabic numbers (1.1.1., 1.1.2., 1.1.3., ...) followed by 1.25 cm tabulation. Leave one blank line (12 pt) before the third level titles and 3 pt after.

#### 2.2.7. Plain text

The plain text is in a regular character style and a size of 11 pt. Paragraphs are justified (left and right), with no indentation and with single line spacing. The vertical spacing between paragraphs is 6 pt.

### 2.3. Equations and mathematical expressions

Equations should be written using the formula editor of the used text processor, left aligned in lines and numbered with consecutive Arabic numerals in round brackets aligned with the right margin. The symbols of variables in formulas and in the text should be written in italics, while vectors and matrices should be written in bold letters. Formulas should be separated with 1 empty line from the other text, and are part of the text in terms of punctuation, like

$$A = \frac{\pi d^2}{4} + A_{ref} \quad (1)$$

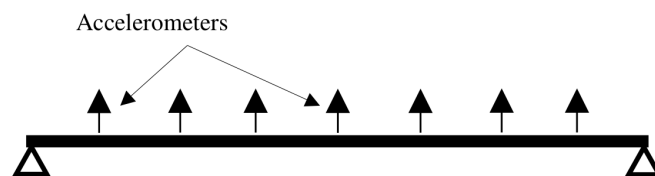
where  $d$  is the diameter of section and  $A_{ref}$  is the reference area. A second example would be

$$\mathbf{M}\phi_i \cdot \omega_i = \mathbf{K}\phi_i \quad (2)$$

where  $\mathbf{M}$  is the mass matrix,  $\mathbf{K}$  is the stiffness matrix and  $\omega_i$  and  $\phi_i$  are the natural frequency and mode shapes, respectively, corresponding to the  $i$ -th mode of the structure. When citing formula numbers in the text, they should be put in round brackets, e.g. Eq. (1).

### 2.4. Figures, diagrams and photographs

Descriptions being an integral part of illustrations should be set using a font not larger than that of the main text of the paper. Descriptions in figures, and figure captions need to be in English. Numbers (consecutive Arabic numerals) preceded by the word “**Figure**” (Bold), and captions should be placed under figures, diagrams and photographs and centered.



**Figure 1:** Data set used in the experiments.

Figure captions have a size of 10 pt and are centered. The expression “**Figure X.**” is printed with a bold character style, but the rest of the caption is printed with a regular character style. There must be one blank line (12 pt) above the top of the figure and one blank line (12 pt) below the figure caption.

### 2.5. Tables

Tables are centered in the typing area, with a numbered caption above. There must be one blank line (12 pt) above the caption and one blank line (12 pt) below the table. The cell margins should be adequate for a reasonable differentiation between columns data.

The font size for the text inside the table is 10 pt. Only horizontal lines should be used to separate table contents.

**Table 1:** Comparison between experimental and numerical results.

Model	Frequency			MAC
	Experimental [Hz]	Numerical [Hz]	Error %	
1	15.26	14.89	2.42	0.9999
2	59.11	58.58	0.90	0.9998
3	132.3	134.1	1.36	0.9995
4	233.4	238.7	2.27	0.9999
5	363.3	373.9	2.92	0.9988

### 3. CONCLUSIONS

It is required to follow these formatting instructions for inclusion in the proceedings. Only the pdf version of the paper is necessary for submission on the conference website.

### ACKNOWLEDGMENTS

The “Acknowledgments” section is placed before the “References” section. The title of this section “Acknowledgments” is formatted as a first level section title, but unnumbered.

### REFERENCES

The references should be ordered according to the order in which they are cited in the text, and preceded by consecutive numbers. When citing in the text, the numbers of references should be put in square brackets, e.g. [1]. The format of the references should be following the citation style given below. The examples given here below refer to descriptions for publications in a journal [1], proceedings [2] or a book [3].

### REFERENCES

- [1] A. Kowalski, B. Dziewulak, and C. Nowacki. A method for reinforcement of steel beams. *Journal of Structures*, 46(3):669–681, 2022.
- [2] S. Borzemski. An algorithm for a certain reliability problem. In *Proc. 7th International Conference on Systems Engineering*, Paris, France, 2016.
- [3] P. Van Overschee and B. De Moor. *Subspace Identification for Linear Systems: Theory, Implementation, Applications*. Kluwer, Dordrecht, The Netherlands, 1996.